

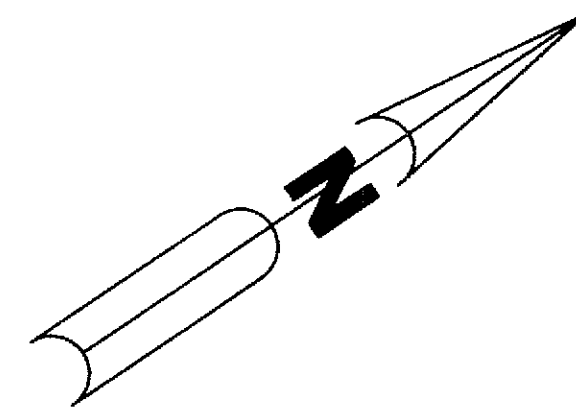
IBIS GOLF AND COUNTRY CLUB PLAT No.36

PLANNED UNIT DEVELOPMENT

BEING A REPLAT OF PARCEL CC AND PARCEL MM, IBIS GOLF AND COUNTRY CLUB PLAT No. 14, RECORDED IN PLAT BOOK 75, AT PAGE 107, OF THE PUBLIC RECORDS OF PALM BEACH COUNTY, FLORIDA LYING LAND IN THE SOUTHWEST QUARTER OF SECTION 13, AND THE NORTHWEST QUARTER OF SECTION 24, TOWNSHIP 42 SOUTH, RANGE 41 EAST, CITY OF WEST PALM BEACH, PALM BEACH COUNTY, FLORIDA

MARCH 2012

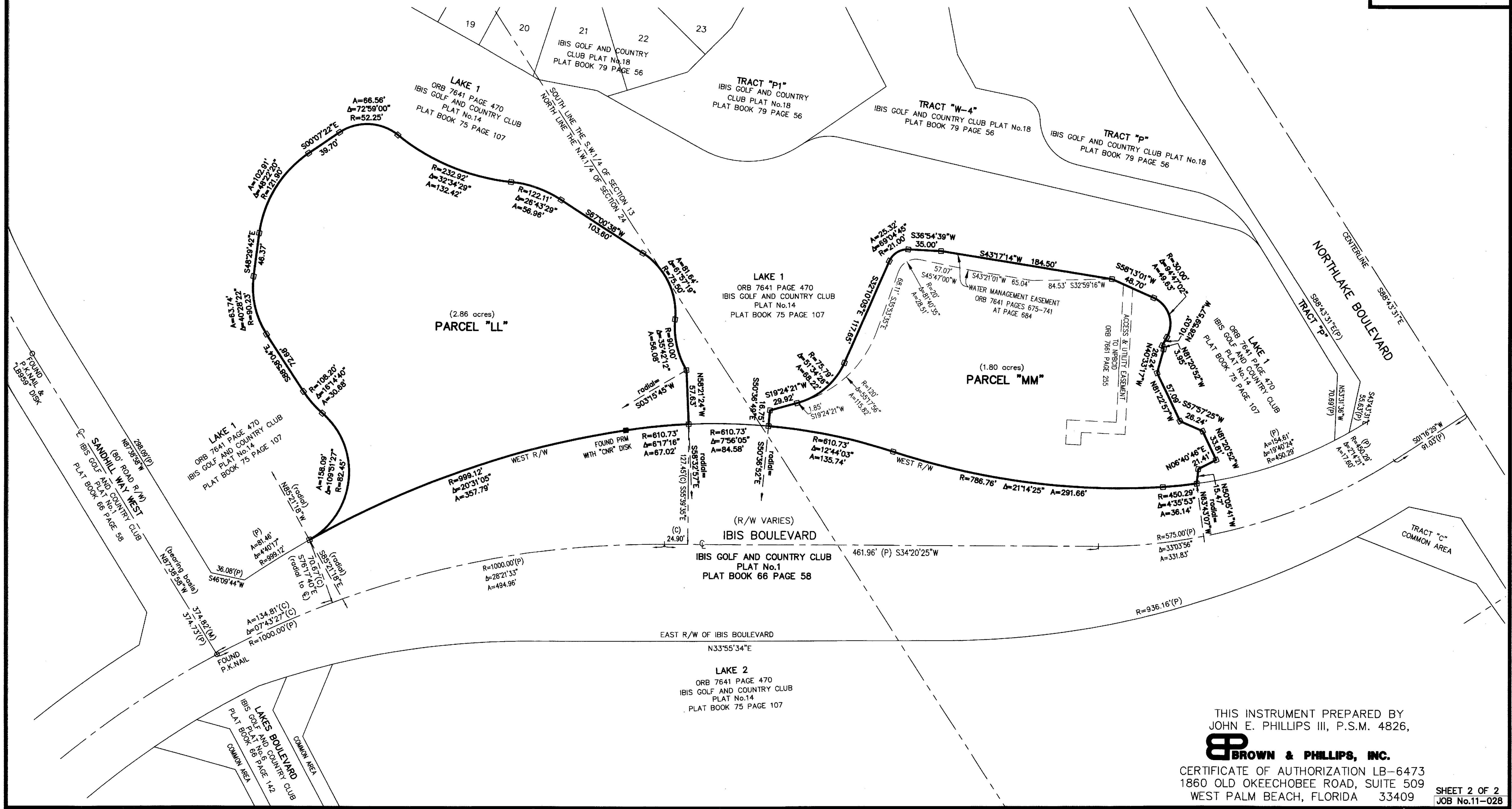
SHEET 2 OF 2




SCALE: 1" = 50'

- ABBREVIATIONS:
- CL - CENTERLINE
 - O.R.B. - OFFICIAL RECORD BOOK
 - PRM - PERMANENT REFERENCE MONUMENT
 - PCP - PERMANENT CONTROL POINT
 - N.L. - PRM IDENTIFICATION STAMPING NOT LEGIBLE
 - NO I.D. - PRM FOUND WITH NO IDENTIFICATION
 - P.B. - PLAT BOOK
 - R - RADIUS
 - Δ - CENTRAL ANGLE
 - A - ARC LENGTH
 - R/W - RIGHT-OF-WAY
 - U.E. - UTILITY EASEMENT
 - (P) - DIMENSION PER THE NOTED RECORD PLAT
 - (M) - MEASURED DIMENSION
 - (C) - CALCULATED DIMENSION BASED ON RECORD PLAT DATA
 - NPBCD - NORTHERN PALM BEACH COUNTY IMPROVEMENT DISTRICT
 - WPB - WEST PALM BEACH
 - POA - PROPERTY OWNERS ASSOCIATION

79



THIS INSTRUMENT PREPARED BY
 JOHN E. PHILLIPS III, P.S.M. 4826,

 CERTIFICATE OF AUTHORIZATION LB-6473
 1860 OLD OKEECHOBEE ROAD, SUITE 509
 WEST PALM BEACH, FLORIDA 33409